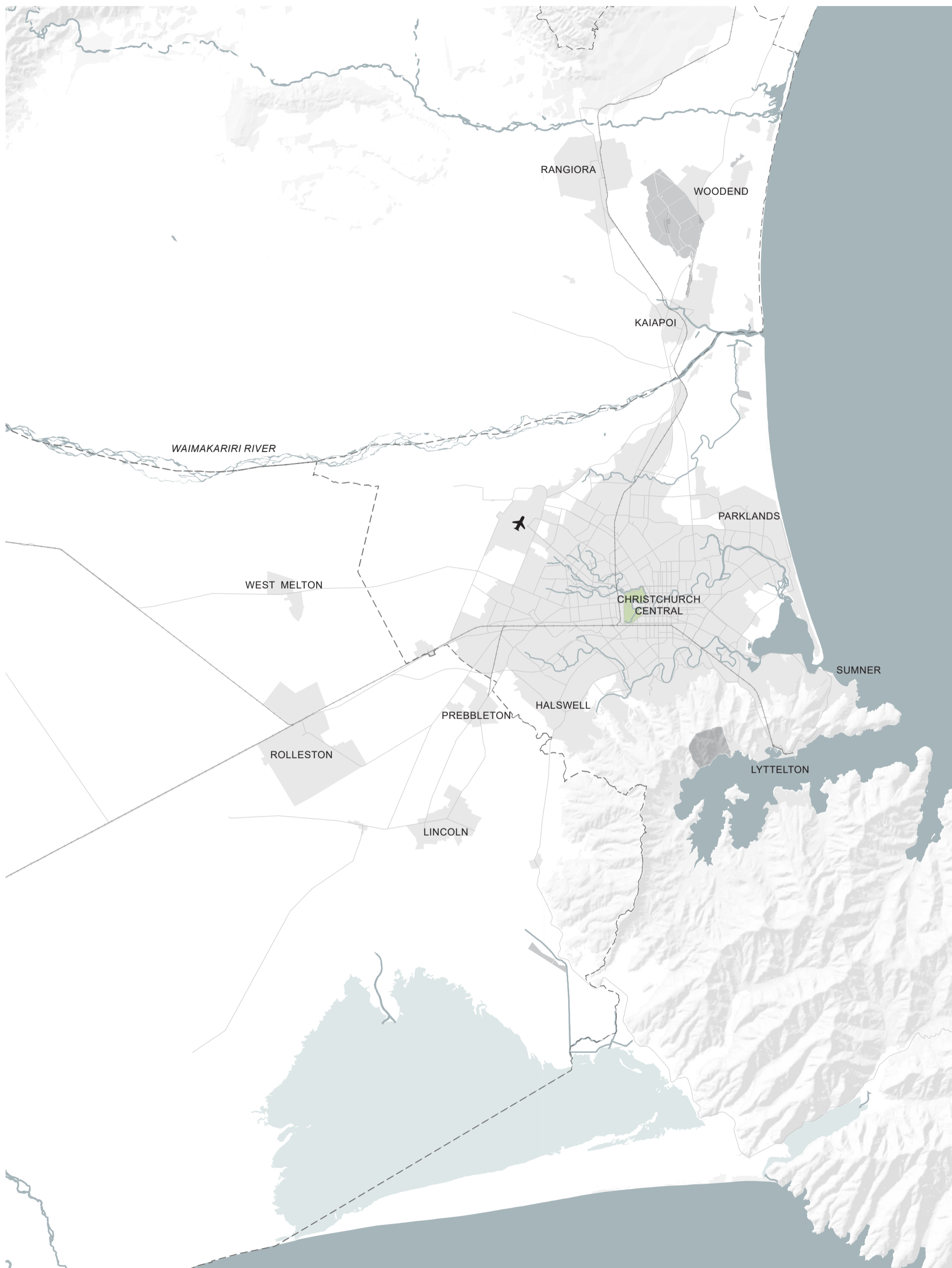


# GREATER CHRISTCHURCH SPATIAL PLAN

## BASE MAP



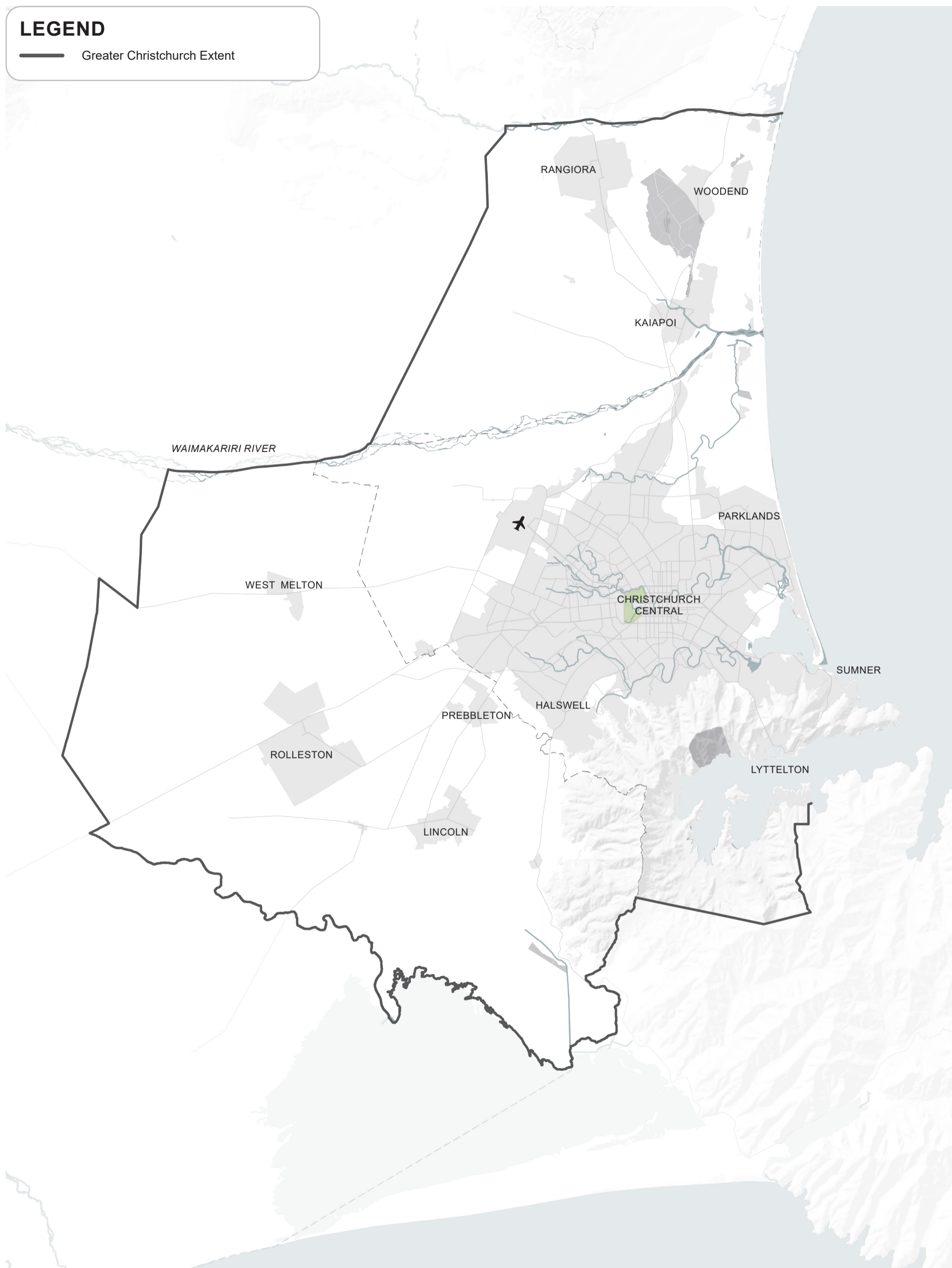
*This map is based on the existing information and Geographic Information System (GIS) data from the four partner Councils. For some constraints, mapping data is unavailable, incomplete, or reliant on emerging policy with legal effect. Refer to the Technical Report for limitations and further information.*

# GREATER CHRISTCHURCH SPATIAL PLAN

## BASE MAP

### LEGEND

— Greater Christchurch Extent



NTS

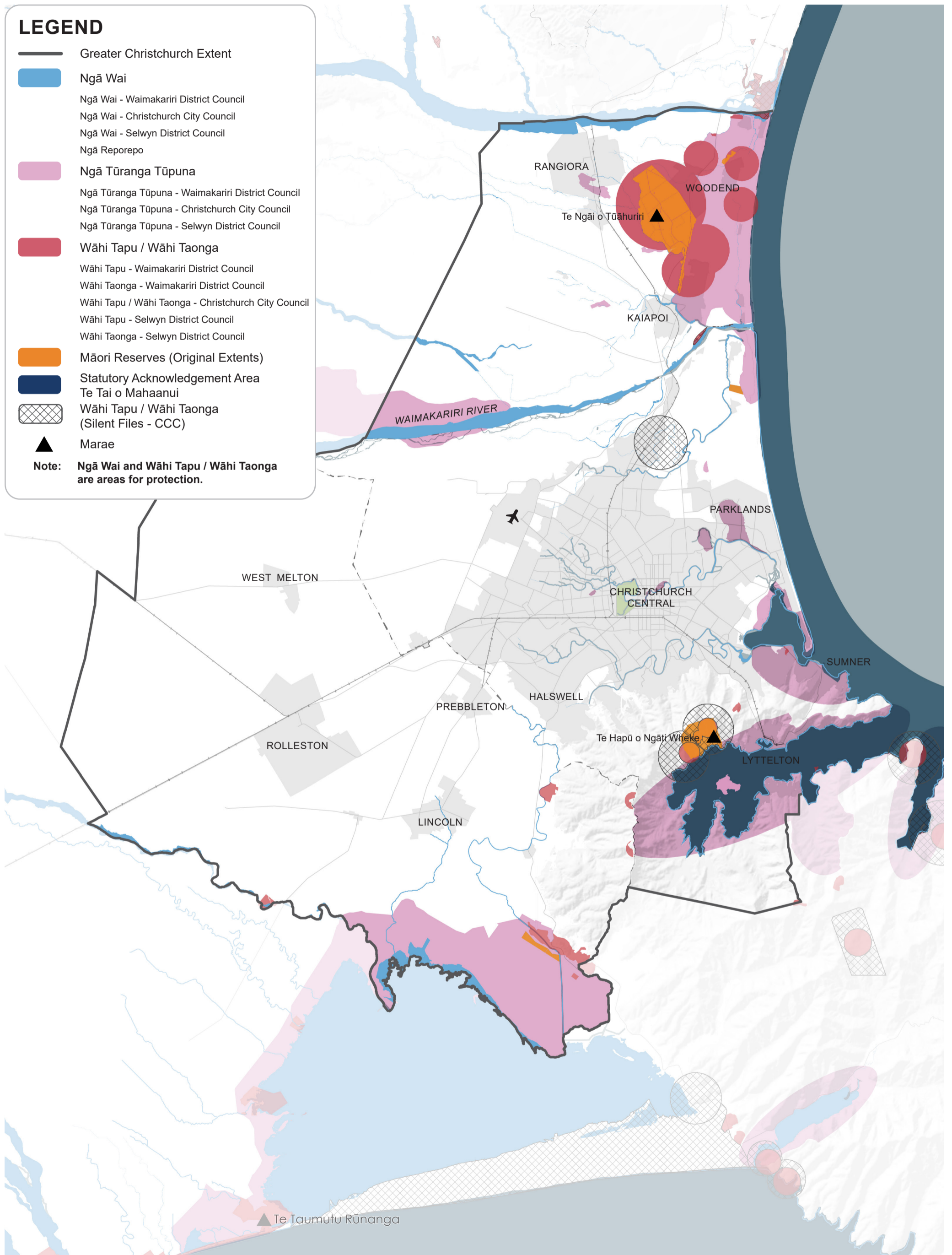
*This map is based on the existing information and Geographic Information System (GIS) data from the four partner Councils. For some constraints, mapping data is unavailable, incomplete, or reliant on emerging policy with legal effect. Refer to the Technical Report for limitations and further information.*

# GREATER CHRISTCHURCH SPATIAL PLAN

## CULTURAL SIGNIFICANCE

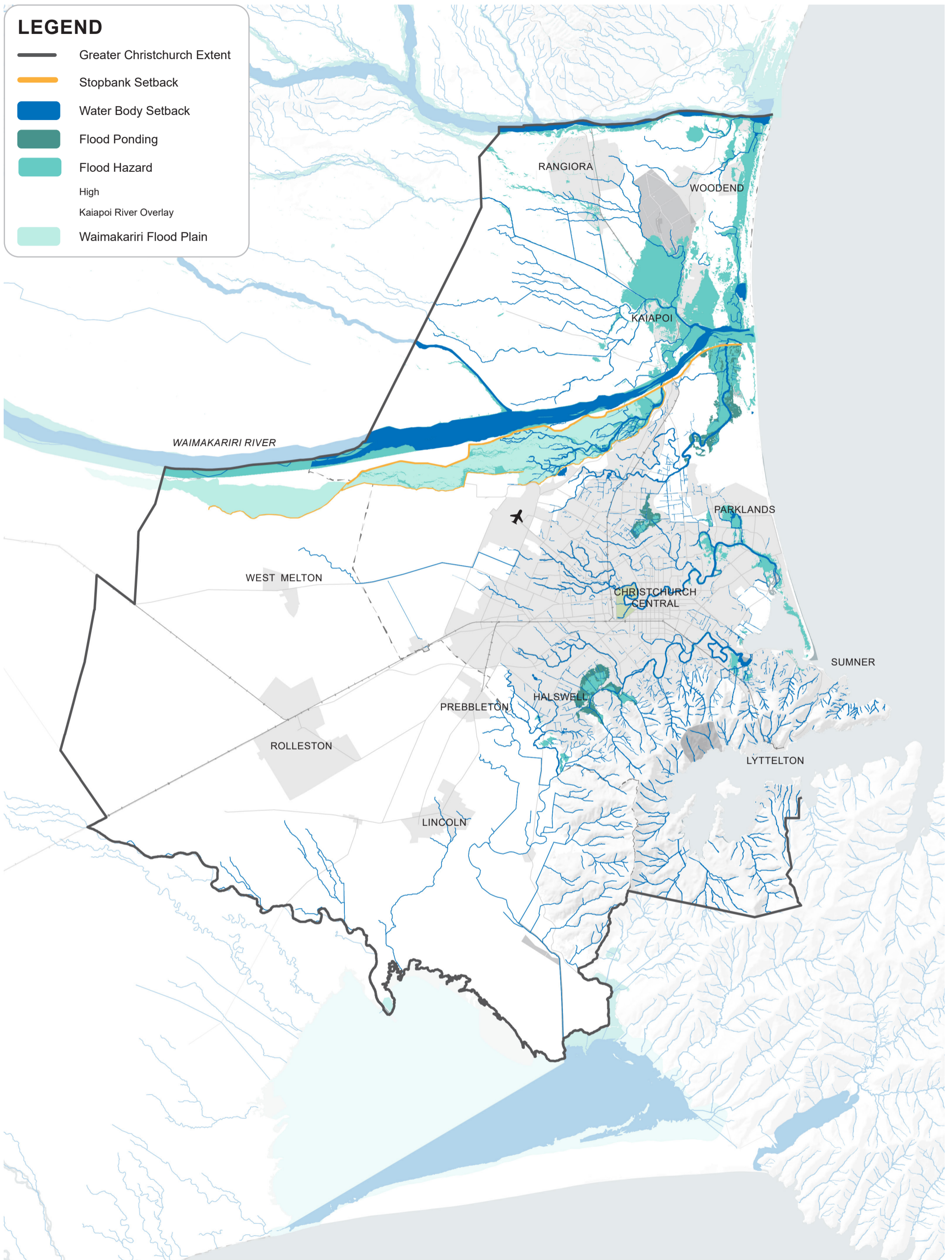
### LEGEND

-  Greater Christchurch Extent
  -  Ngā Wai
    - Ngā Wai - Waimakariri District Council
    - Ngā Wai - Christchurch City Council
    - Ngā Wai - Selwyn District Council
    - Ngā Reporepo
  -  Ngā Tūranga Tūpuna
    - Ngā Tūranga Tūpuna - Waimakariri District Council
    - Ngā Tūranga Tūpuna - Christchurch City Council
    - Ngā Tūranga Tūpuna - Selwyn District Council
  -  Wāhi Tapu / Wāhi Taonga
    - Wāhi Tapu - Waimakariri District Council
    - Wāhi Taonga - Waimakariri District Council
    - Wāhi Tapu / Wāhi Taonga - Christchurch City Council
    - Wāhi Tapu - Selwyn District Council
    - Wāhi Taonga - Selwyn District Council
  -  Māori Reserves (Original Extents)
  -  Statutory Acknowledgement Area  
Te Tai o Mahaanui
  -  Wāhi Tapu / Wāhi Taonga  
(Silent Files - CCC)
  -  Marae
- Note:** Ngā Wai and Wāhi Tapu / Wāhi Taonga are areas for protection.










# GREATER CHRISTCHURCH SPATIAL PLAN

## NATURAL HAZARDS - FRESHWATER



### LEGEND

-  Greater Christchurch Extent
-  Stopbank Setback
-  Water Body Setback
-  Flood Ponding
-  Flood Hazard
-  High Kaiapoi River Overlay
-  Waimakariri Flood Plain









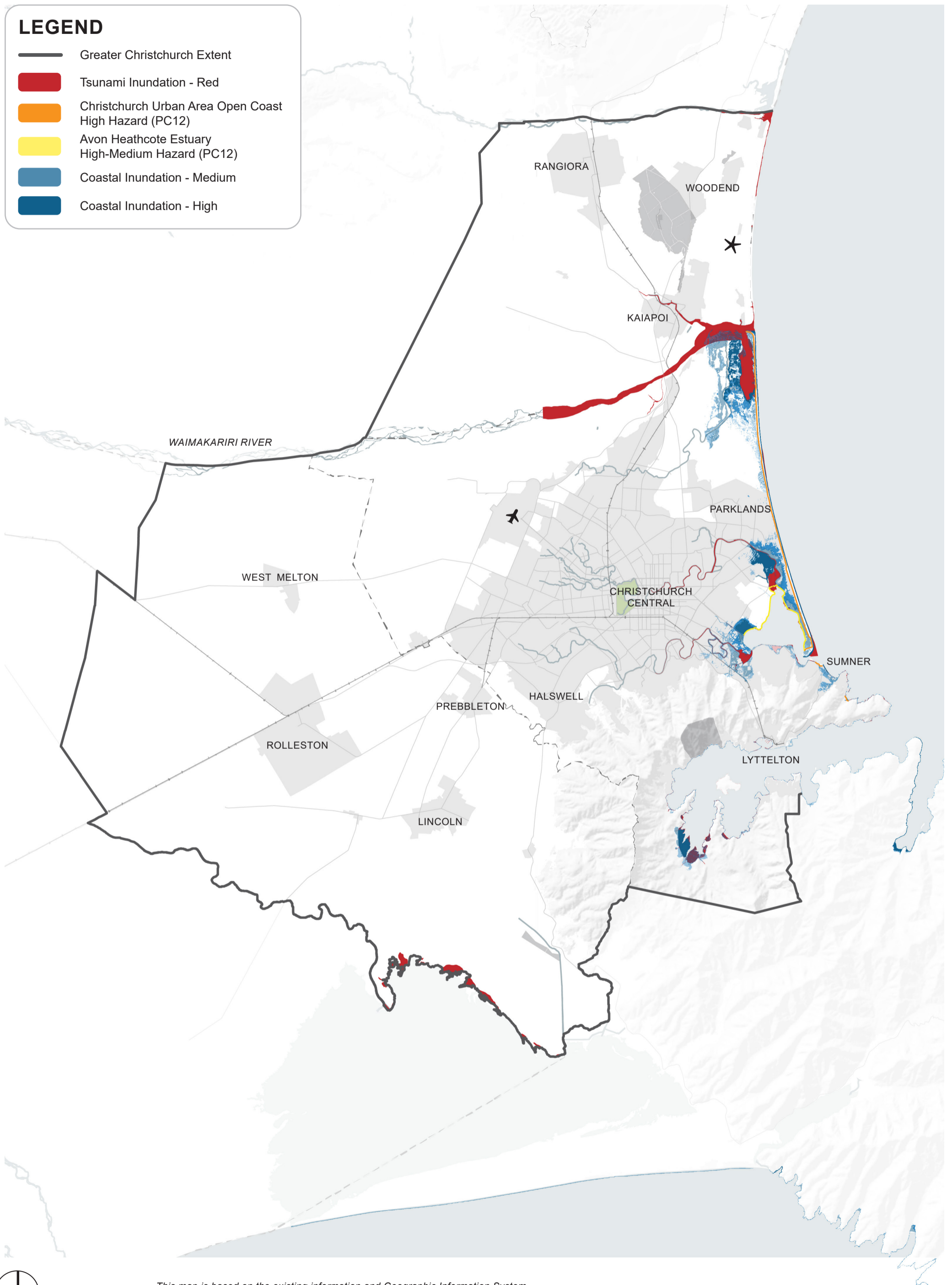
*This map is based on the existing information and Geographic Information System (GIS) data from the four partner Councils. For some constraints, mapping data is unavailable, incomplete, or reliant on emerging policy with legal effect. Refer to the Technical Report for limitations and further information.*

# GREATER CHRISTCHURCH SPATIAL PLAN

## NATURAL HAZARDS - COASTAL

### LEGEND

-  Greater Christchurch Extent
-  Tsunami Inundation - Red
-  Christchurch Urban Area Open Coast High Hazard (PC12)
-  Avon Heathcote Estuary High-Medium Hazard (PC12)
-  Coastal Inundation - Medium
-  Coastal Inundation - High



✱ This map is based on the existing information and Geographic Information System (GIS) data from the four partner Councils. For some constraints, mapping data is unavailable, incomplete, or reliant on emerging policy with legal effect. Refer to the Technical Report for limitations and further information.

# GREATER CHRISTCHURCH SPATIAL PLAN

## NATURAL HAZARDS - LAND

### LEGEND

— Greater Christchurch Extent

### SLOPE / ROCKFALL HAZARD

Cliff Collapse Management Area 1

Cliff Collapse Management Area 2

Mass Movement Management Area 1

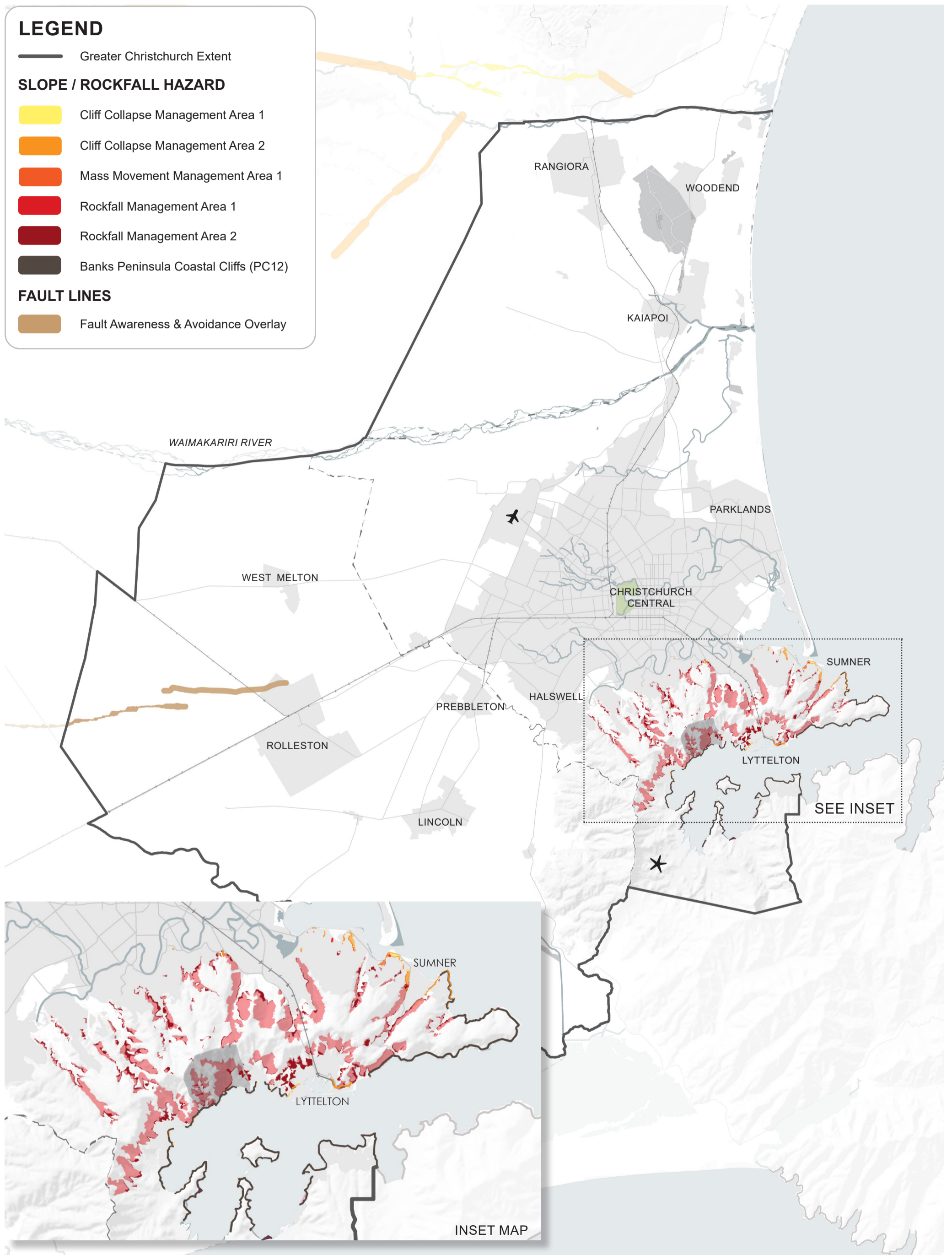
Rockfall Management Area 1

Rockfall Management Area 2

Banks Peninsula Coastal Cliffs (PC12)

### FAULT LINES

Fault Awareness & Avoidance Overlay



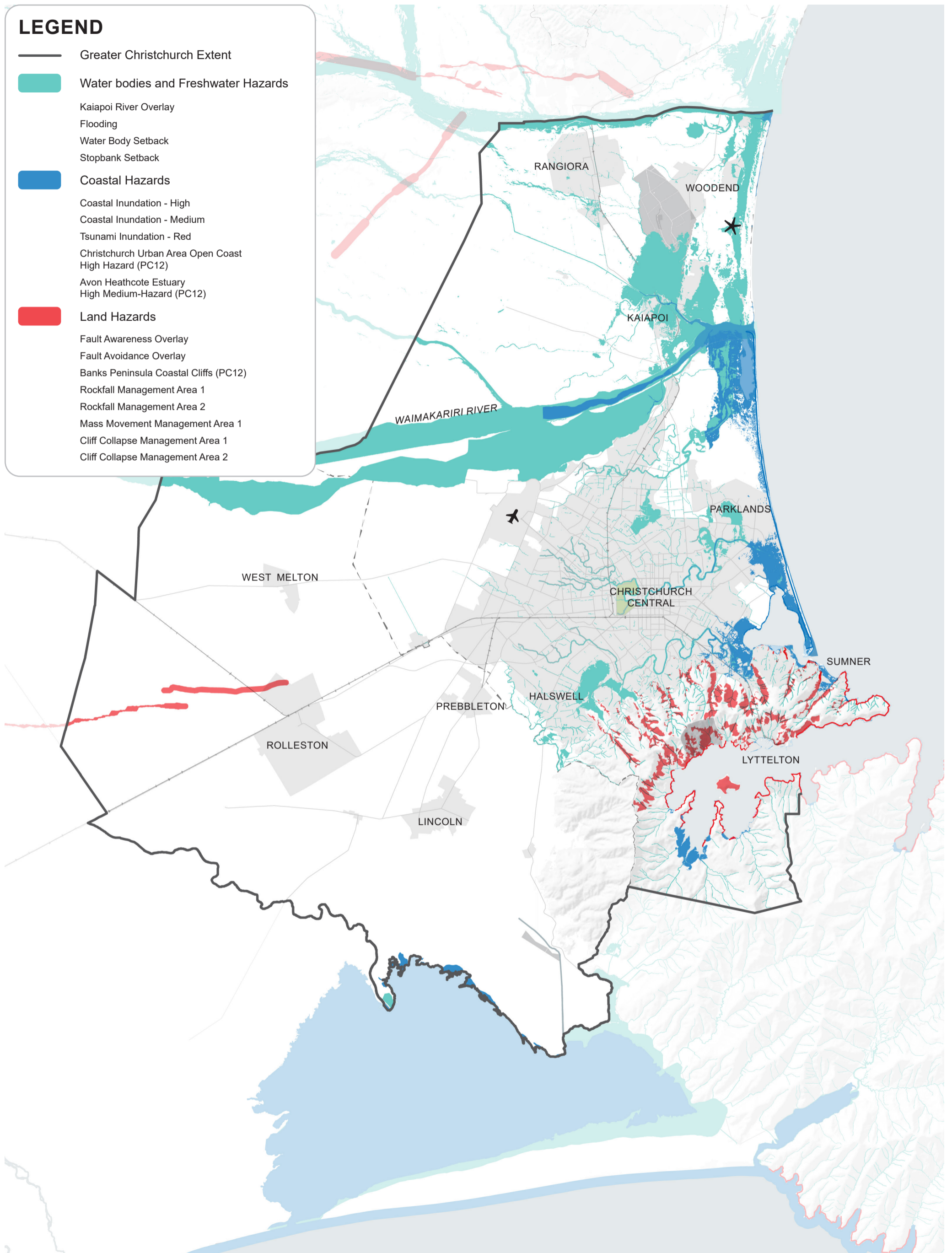
★ This map is based on the existing information and Geographic Information System (GIS) data from the four partner Councils. For some constraints, mapping data is unavailable, incomplete, or reliant on emerging policy with legal effect. Refer to the Technical Report for limitations and further information.

# GREATER CHRISTCHURCH SPATIAL PLAN

## NATURAL HAZARDS - OVERVIEW

### LEGEND

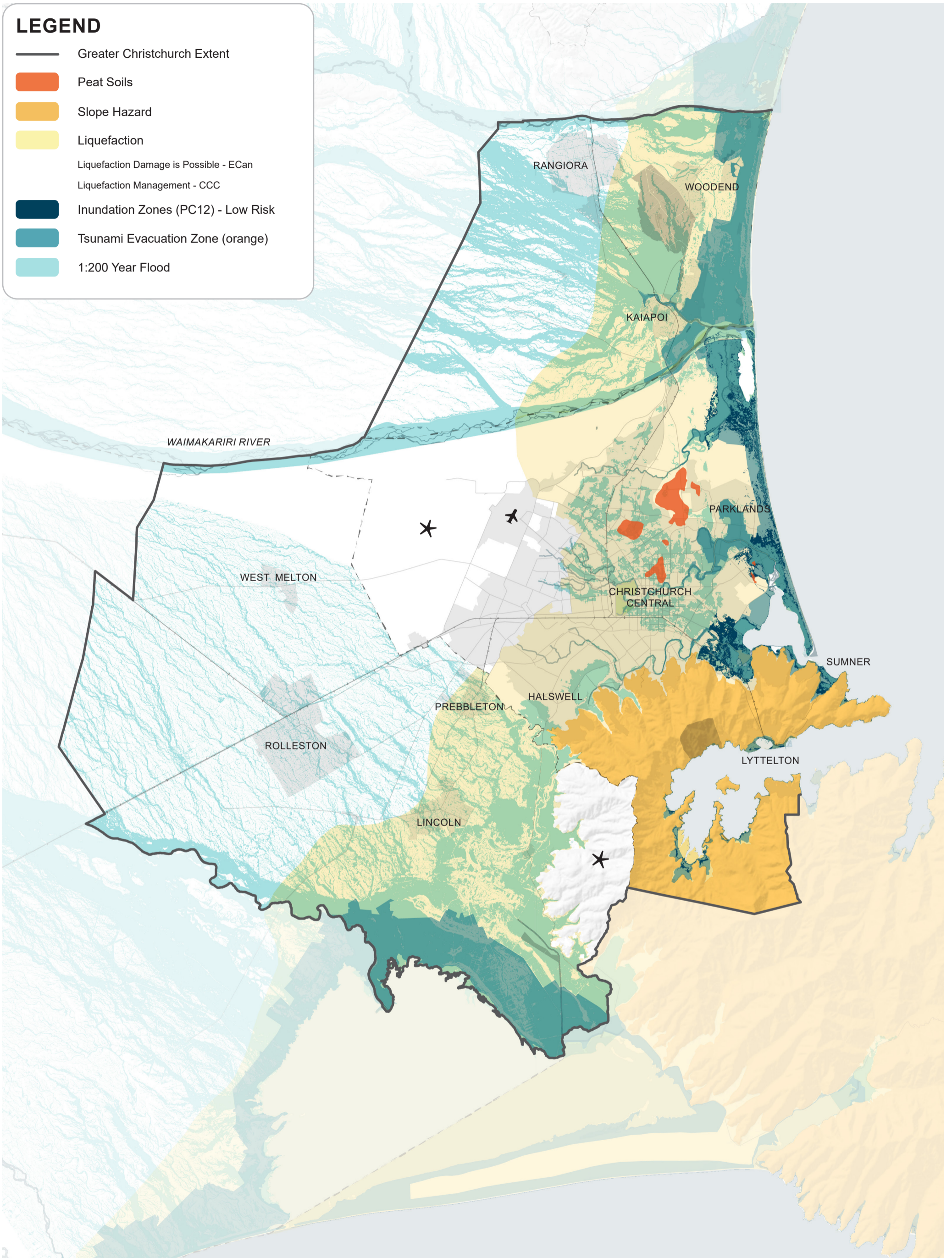
-  Greater Christchurch Extent
-  Water bodies and Freshwater Hazards
  - Kaiapoi River Overlay
  - Flooding
  - Water Body Setback
  - Stopbank Setback
-  Coastal Hazards
  - Coastal Inundation - High
  - Coastal Inundation - Medium
  - Tsunami Inundation - Red
  - Christchurch Urban Area Open Coast High Hazard (PC12)
  - Avon Heathcote Estuary High Medium-Hazard (PC12)
-  Land Hazards
  - Fault Awareness Overlay
  - Fault Avoidance Overlay
  - Banks Peninsula Coastal Cliffs (PC12)
  - Rockfall Management Area 1
  - Rockfall Management Area 2
  - Mass Movement Management Area 1
  - Cliff Collapse Management Area 1
  - Cliff Collapse Management Area 2



✳ This map is based on the existing information and Geographic Information System (GIS) data from the four partner Councils. For some constraints, mapping data is unavailable, incomplete, or reliant on emerging policy with legal effect. Refer to the Technical Report for limitations and further information.

# GREATER CHRISTCHURCH SPATIAL PLAN

## NATURAL HAZARDS - NEGOTIABLE CONSTRAINTS








✳ This map is based on the existing information and Geographic Information System (GIS) data from the four partner Councils. For some constraints, mapping data is unavailable, incomplete, or reliant on emerging policy with legal effect. Refer to the Technical Report for limitations and further information.

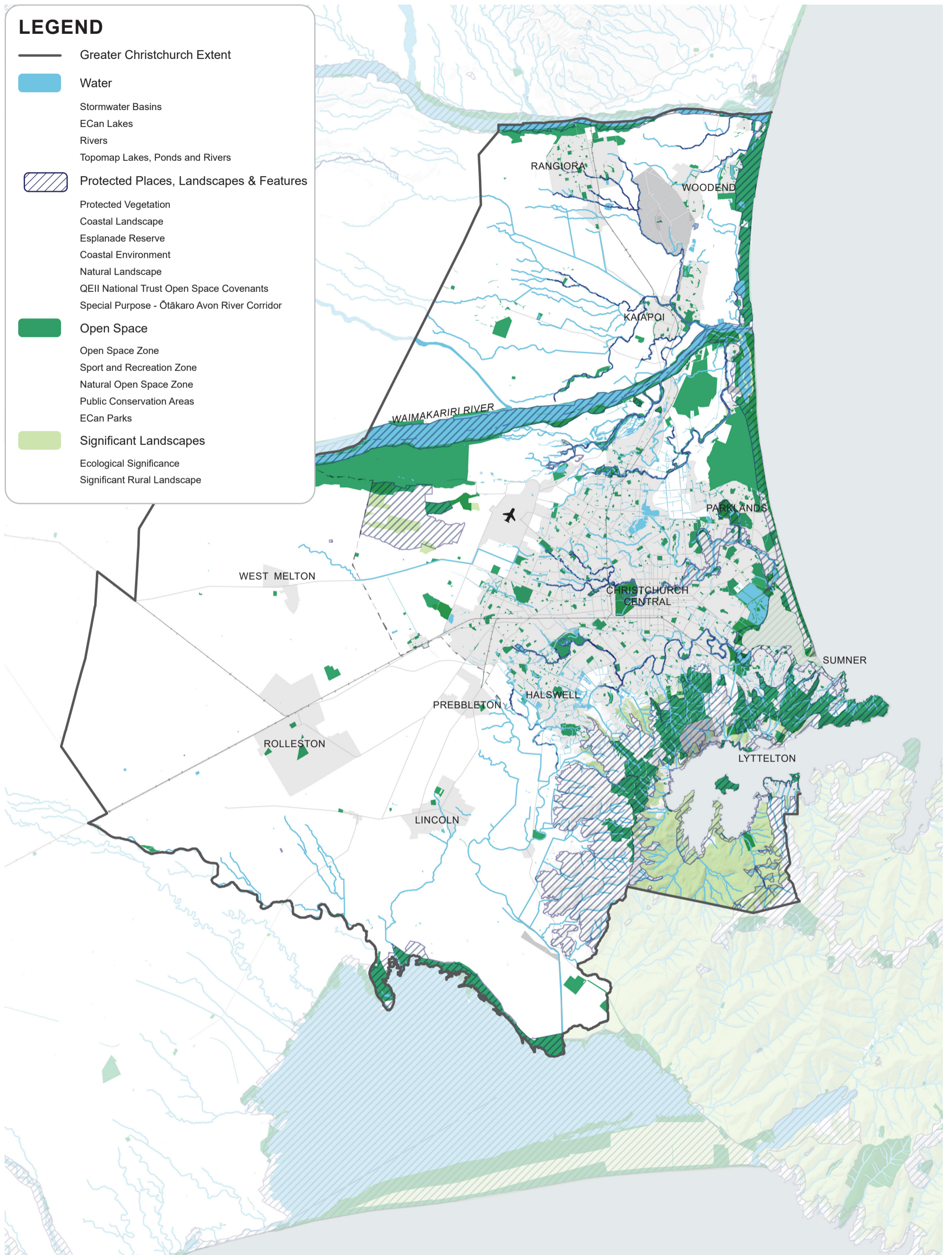


# GREATER CHRISTCHURCH SPATIAL PLAN

## ENVIRONMENTAL

### LEGEND

-  Greater Christchurch Extent
-  Water
  - Stormwater Basins
  - ECan Lakes
  - Rivers
  - Topomap Lakes, Ponds and Rivers
-  Protected Places, Landscapes & Features
  - Protected Vegetation
  - Coastal Landscape
  - Esplanade Reserve
  - Coastal Environment
  - Natural Landscape
  - QEII National Trust Open Space Covenants
  - Special Purpose - Ōtākaro Avon River Corridor
-  Open Space
  - Open Space Zone
  - Sport and Recreation Zone
  - Natural Open Space Zone
  - Public Conservation Areas
  - ECan Parks
-  Significant Landscapes
  - Ecological Significance
  - Significant Rural Landscape



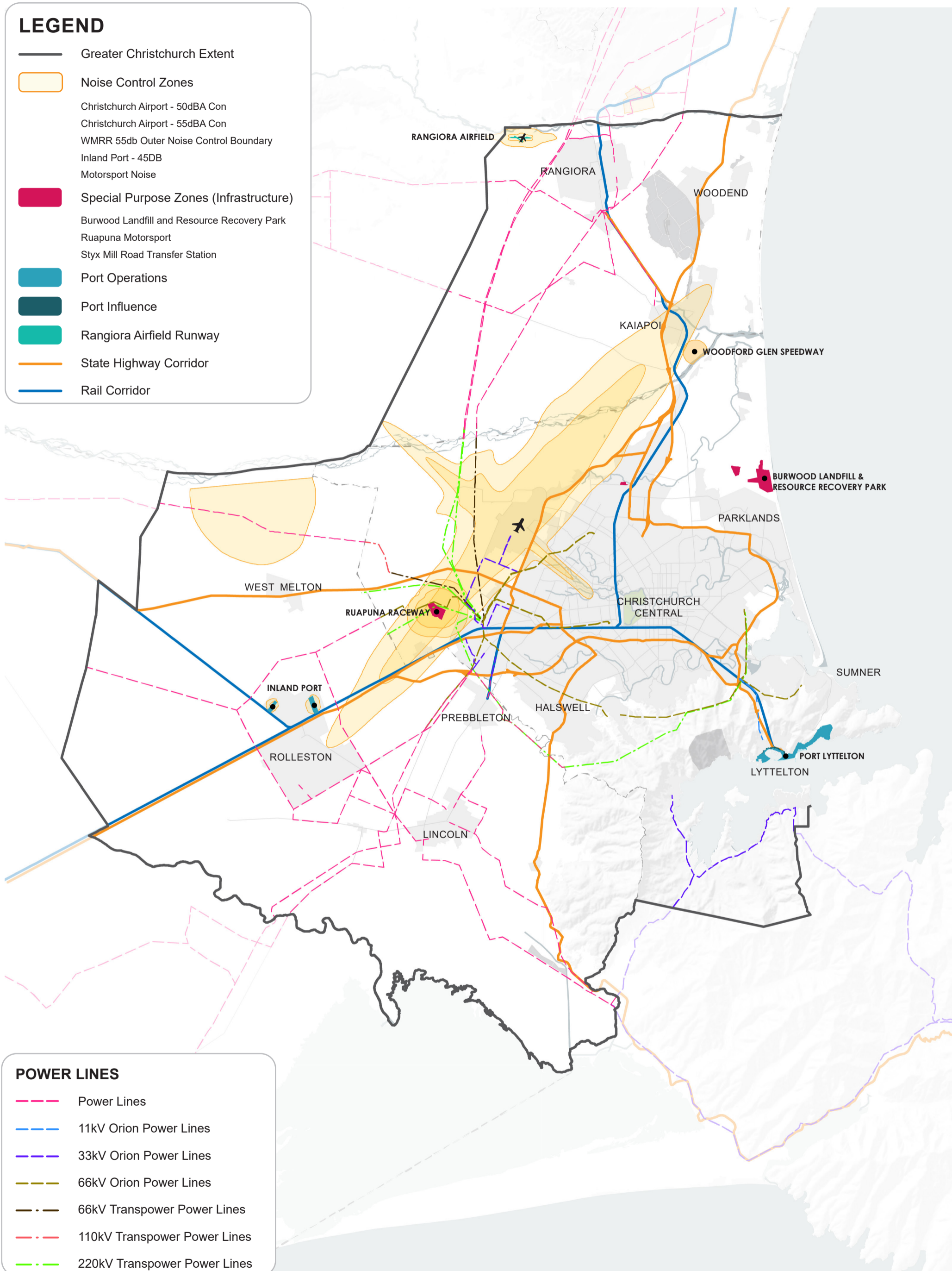
*This map is based on the existing information and Geographic Information System (GIS) data from the four partner Councils. For some constraints, mapping data is unavailable, incomplete, or reliant on emerging policy with legal effect. Refer to the Technical Report for limitations and further information.*

# GREATER CHRISTCHURCH SPATIAL PLAN

## INFRASTRUCTURE

### LEGEND

-  Greater Christchurch Extent
-  Noise Control Zones
  - Christchurch Airport - 50dBA Con
  - Christchurch Airport - 55dBA Con
  - WMRR 55db Outer Noise Control Boundary
  - Inland Port - 45dB
  - Motorsport Noise
-  Special Purpose Zones (Infrastructure)
  - Burwood Landfill and Resource Recovery Park
  - Ruapuna Motorsport
  - Styx Mill Road Transfer Station
-  Port Operations
-  Port Influence
-  Rangiora Airfield Runway
-  State Highway Corridor
-  Rail Corridor



### POWER LINES

-  Power Lines
-  11kV Orion Power Lines
-  33kV Orion Power Lines
-  66kV Orion Power Lines
-  66kV Transpower Power Lines
-  110kV Transpower Power Lines
-  220kV Transpower Power Lines



*This map is based on the existing information and Geographic Information System (GIS) data from the four partner Councils. For some constraints, mapping data is unavailable, incomplete, or reliant on emerging policy with legal effect. Refer to the Technical Report for limitations and further information.*

# GREATER CHRISTCHURCH SPATIAL PLAN

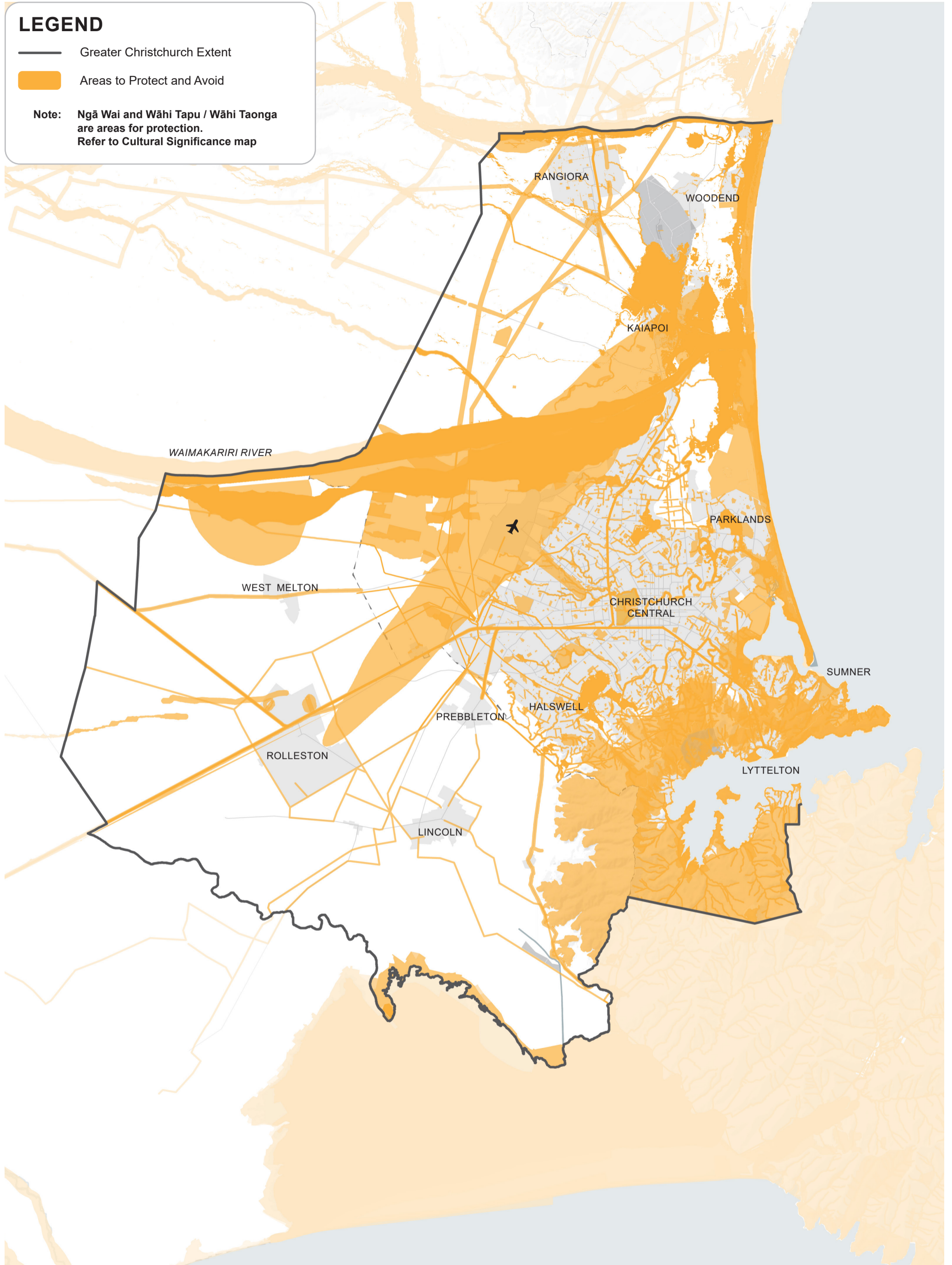
## AREAS TO PROTECT AND AVOID

### LEGEND

— Greater Christchurch Extent

Areas to Protect and Avoid

Note: Ngā Wai and Wāhi Tapu / Wāhi Taonga are areas for protection. Refer to Cultural Significance map








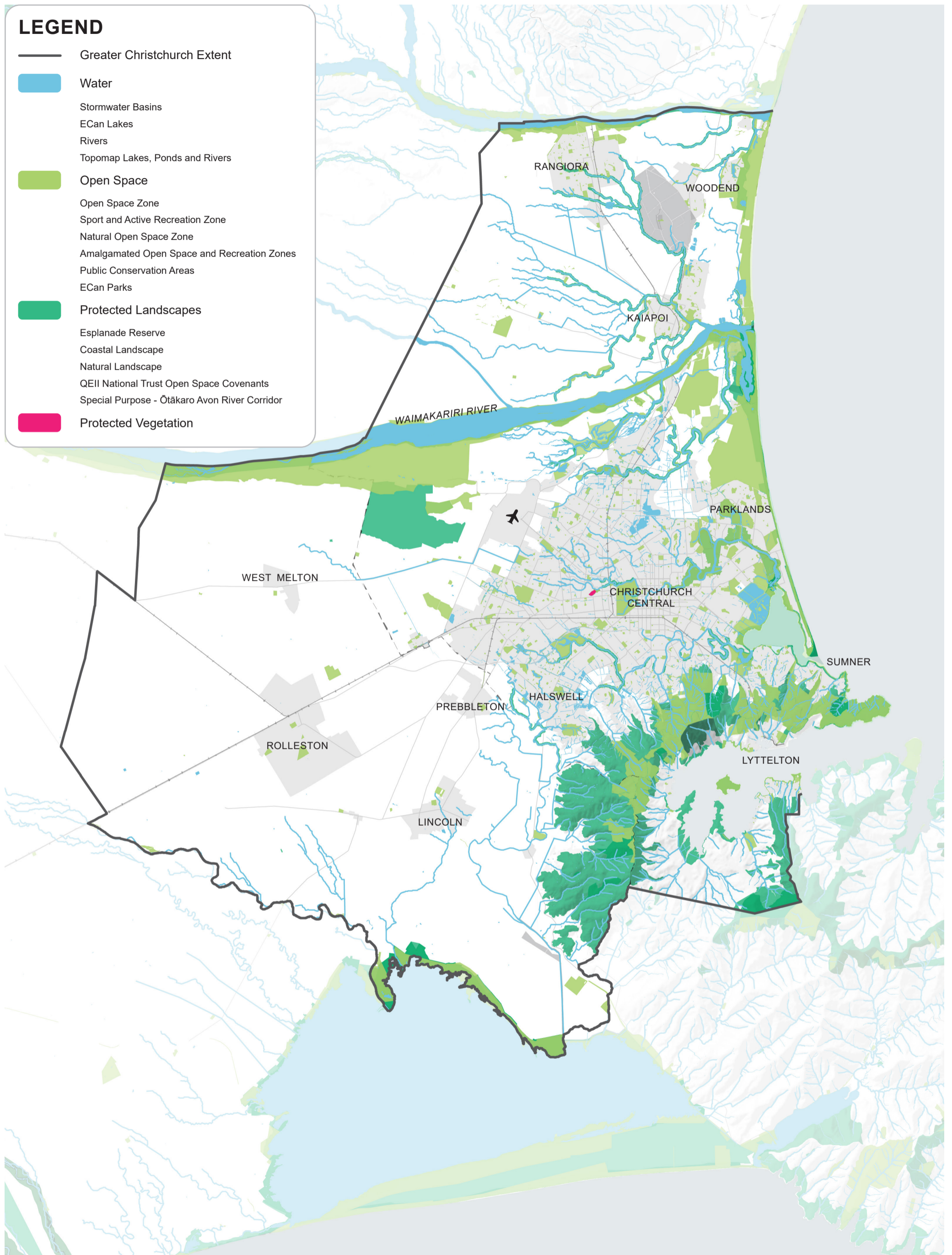
*This map is based on the existing information and Geographic Information System (GIS) data from the four partner Councils. For some constraints, mapping data is unavailable, incomplete, or reliant on emerging policy with legal effect. Refer to the Technical Report for limitations and further information.*

# GREATER CHRISTCHURCH SPATIAL PLAN

## BLUE GREEN NETWORK

### LEGEND

-  Greater Christchurch Extent
-  Water
  - Stormwater Basins
  - ECan Lakes
  - Rivers
  - Topomap Lakes, Ponds and Rivers
-  Open Space
  - Open Space Zone
  - Sport and Active Recreation Zone
  - Natural Open Space Zone
  - Amalgamated Open Space and Recreation Zones
  - Public Conservation Areas
  - ECan Parks
-  Protected Landscapes
  - Esplanade Reserve
  - Coastal Landscape
  - Natural Landscape
  - QEII National Trust Open Space Covenants
  - Special Purpose - Ōtākaro Avon River Corridor
-  Protected Vegetation



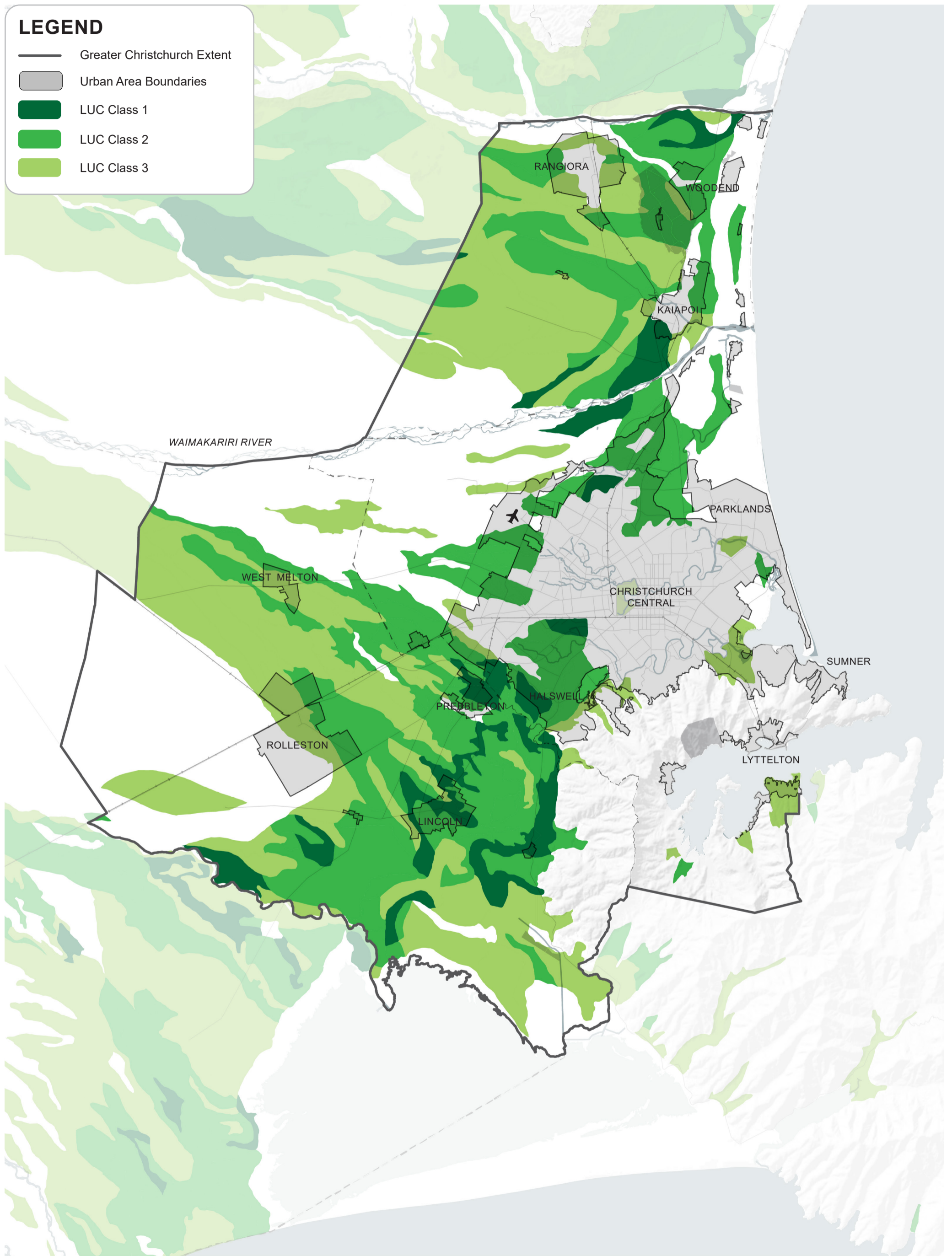
*This map is based on the existing information and Geographic Information System (GIS) data from the four partner Councils. For some constraints, mapping data is unavailable, incomplete, or reliant on emerging policy with legal effect. Refer to the Technical Report for limitations and further information.*

# GREATER CHRISTCHURCH SPATIAL PLAN

## LAND USE CAPABILITY

### LEGEND

- Greater Christchurch Extent
- Urban Area Boundaries
- LUC Class 1
- LUC Class 2
- LUC Class 3



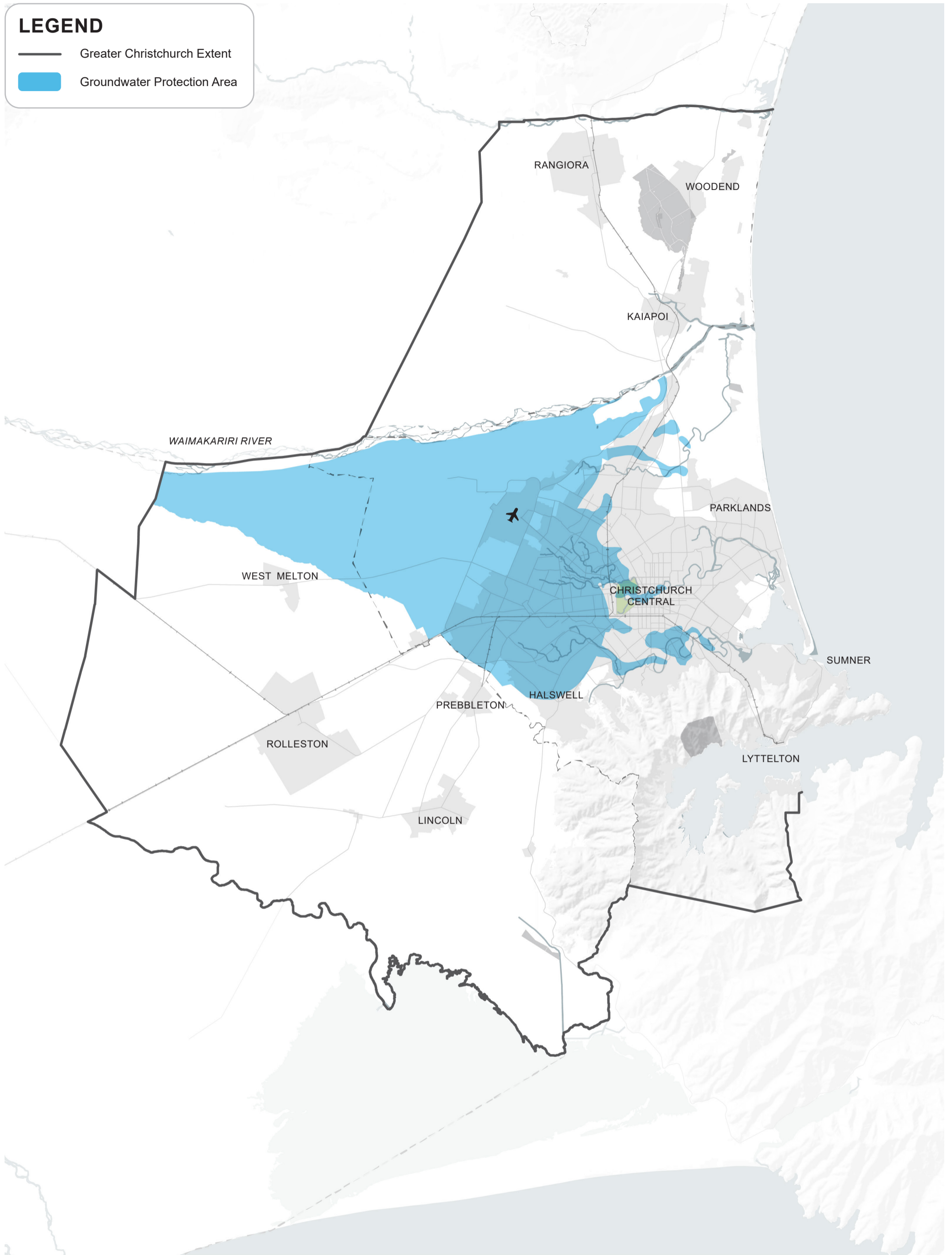
*This map is based on the existing information and Geographic Information System (GIS) data from the four partner Councils. For some constraints, mapping data is unavailable, incomplete, or reliant on emerging policy with legal effect. Refer to the Technical Report for limitations and further information.*

# GREATER CHRISTCHURCH SPATIAL PLAN

## GROUNDWATER PROTECTION

### LEGEND

- Greater Christchurch Extent
- Groundwater Protection Area



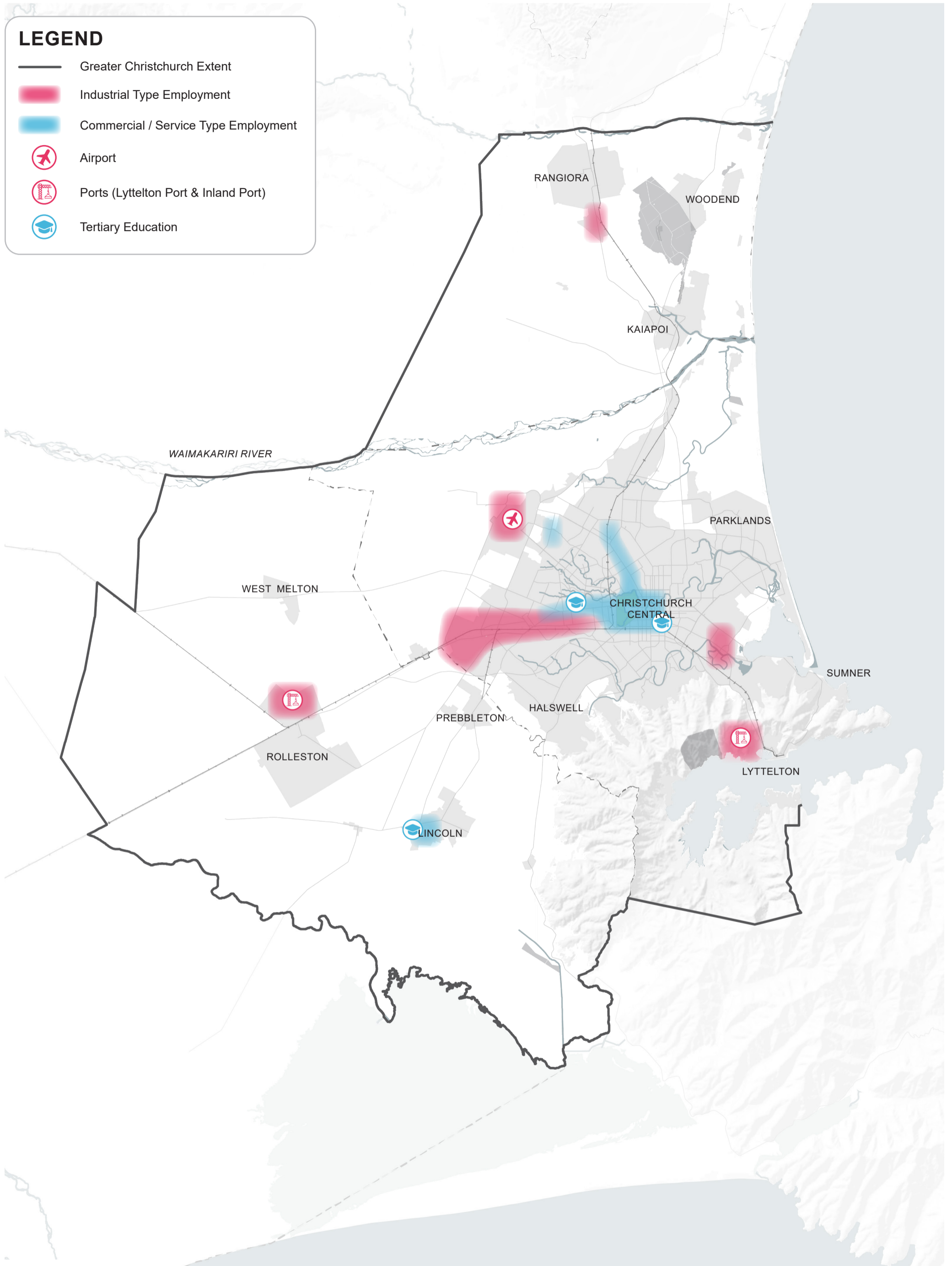
*This map is based on the existing information and Geographic Information System (GIS) data from the four partner Councils. For some constraints, mapping data is unavailable, incomplete, or reliant on emerging policy with legal effect. Refer to the Technical Report for limitations and further information.*

# GREATER CHRISTCHURCH SPATIAL PLAN

## ECONOMIC ASSETS

### LEGEND

- Greater Christchurch Extent
- Industrial Type Employment
- Commercial / Service Type Employment
- Airport
- Ports (Lyttelton Port & Inland Port)
- Tertiary Education

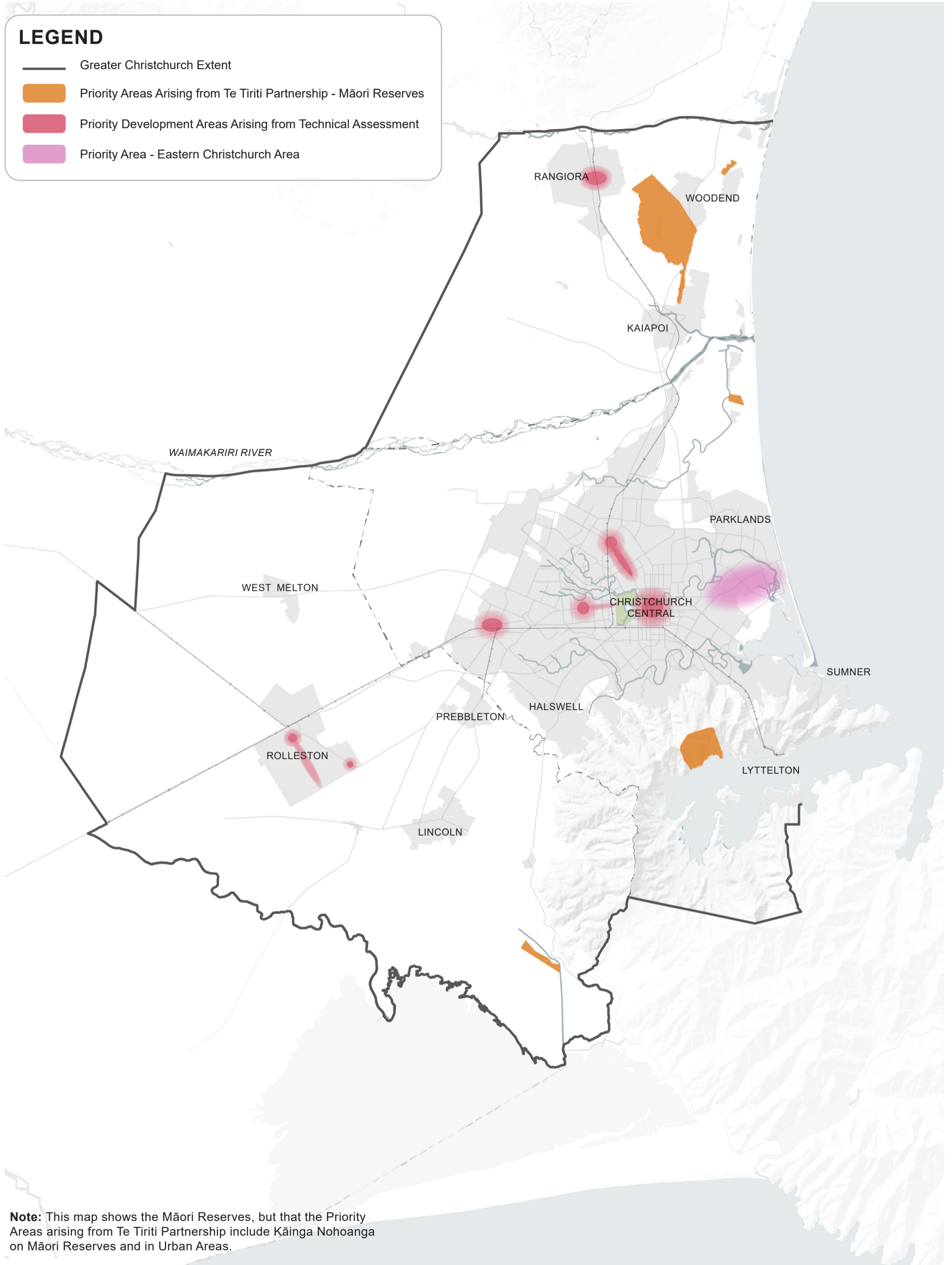


# GREATER CHRISTCHURCH SPATIAL PLAN

## PRIORITY DEVELOPMENT AREAS

### LEGEND

- Greater Christchurch Extent
- Priority Areas Arising from Te Tiriti Partnership - Māori Reserves
- Priority Development Areas Arising from Technical Assessment
- Priority Area - Eastern Christchurch Area



**Note:** This map shows the Māori Reserves, but that the Priority Areas arising from Te Tiriti Partnership include Kāinga Nohoanga on Māori Reserves and in Urban Areas.

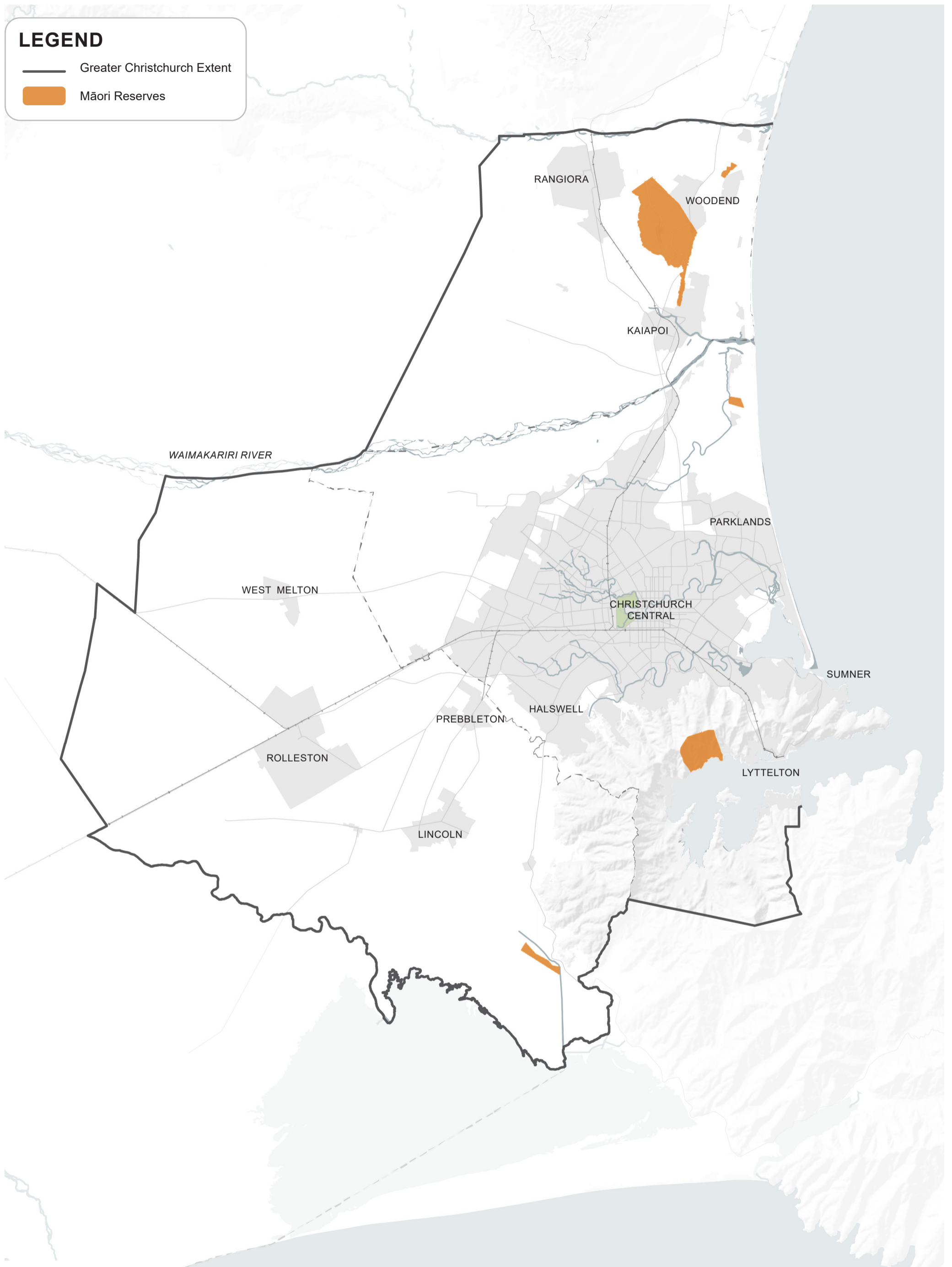


*This map is based on the existing information and Geographic Information System (GIS) data from the four partner Councils. For some constraints, mapping data is unavailable, incomplete, or reliant on emerging policy with legal effect. Refer to the Technical Report for limitations and further information.*



# GREATER CHRISTCHURCH SPATIAL PLAN

## MĀORI RESERVES



### LEGEND

- Greater Christchurch Extent
- Māori Reserves








*This map is based on the existing information and Geographic Information System (GIS) data from the four partner Councils. For some constraints, mapping data is unavailable, incomplete, or reliant on emerging policy with legal effect. Refer to the Technical Report for limitations and further information.*

# GREATER CHRISTCHURCH SPATIAL PLAN

## REGIONAL PLAN

### LEGEND

-  Greater Christchurch Extent
-  Council Boundaries
-  Main Roads
-  Railways
-  Urban Areas

