

# Canterbury

District Health Board

Te Poari Hauora o Waitaha

## Submission on Our Space 2018-2048: Greater Christchurch Settlement Pattern Update

**To:** Greater Christchurch Partnership  
ourspace@greaterchristchurch.org.nz

**Submitter:** Canterbury District Health Board  
  
Attn: Sandy Brinsdon  
Community and Public Health  
C/- Canterbury District Health Board  
PO Box 1475  
Christchurch 8140

**Proposal:** Greater Christchurch Settlement Pattern Update

## SUBMISSION ON OUR SPACE

### Details of submitter

1. Canterbury District Health Board (CDHB).
2. The submitter is responsible for promoting the reduction of adverse environmental effects on the health of people and communities and to improve, promote and protect their health pursuant to the New Zealand Public Health and Disability Act 2000 and the Health Act 1956. These statutory obligations are the responsibility of the Ministry of Health and, in the Canterbury District, are carried out under contract by Community and Public Health under Crown funding agreements on behalf of the Canterbury District Health Board.

### Details of submission

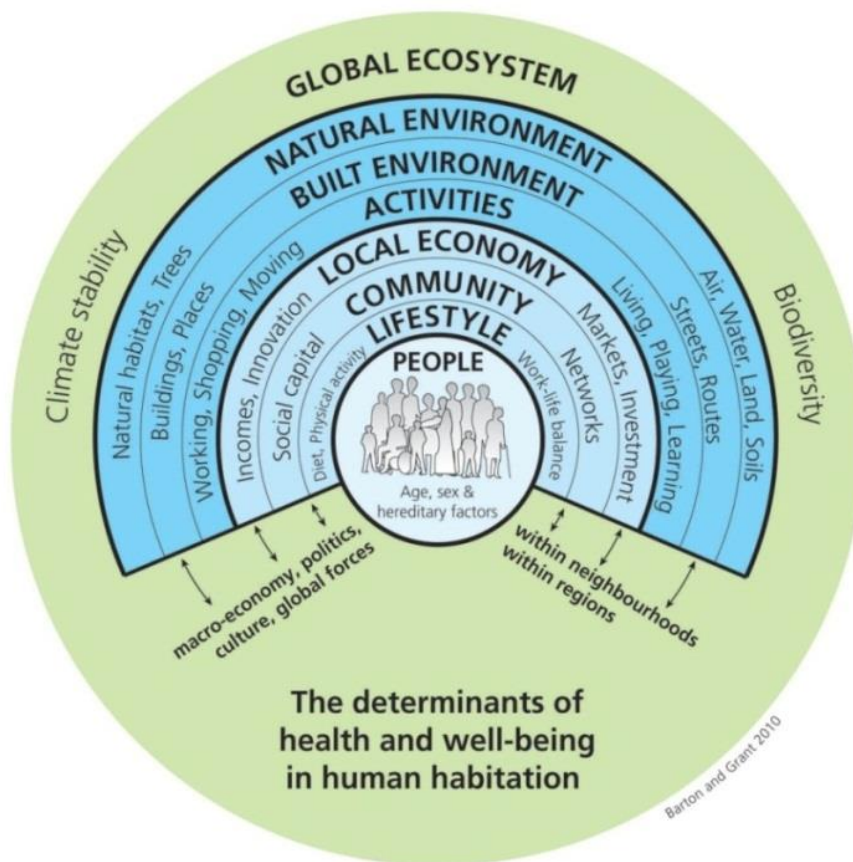
3. We welcome the opportunity to comment on Our Space 2018-2048. The future health of our populations is not just reliant on hospitals, but on a responsive environment where all sectors work collaboratively.
4. While health care services are an important determinant of health, health is also influenced by a wide range of factors beyond the health sector. Health care services manage disease and trauma and are an important determinant of health outcomes. However health creation and wellbeing (overall quality of life) is influenced by a wide range of factors beyond the health sector.
5. These influences can be described as the conditions in which people are born, grow, live, work and age, and are impacted by environmental, social and behavioural factors. They are often referred to as the 'social determinants of health'<sup>1</sup>. The diagram<sup>2</sup> below shows how the various influences on health are complex and interlinked.
6. The most effective way to maximise people's wellbeing is to take these factors into account as early as possible during decision making and strategy development. Initiatives to improve health outcomes and overall quality of life must involve

---

<sup>1</sup> Public Health Advisory Committee. 2004. *The Health of People and Communities. A Way Forward: Public Policy and the Economic Determinants of Health*. Public Health Advisory Committee: Wellington.

<sup>2</sup> Barton, H and Grant, M. (2006) A health map for the local human habitat. *The Journal of the Royal Society for the Promotion of Health* 126 (6), pp 252-253. <http://www.bne.uwe.ac.uk/who/healthmap/default.asp>

organisations and groups beyond the health sector, such as local government if they are to have a reasonable impact<sup>3</sup>.



<sup>3</sup> McGinnis JM, Williams-Russo P, Knickman JR. 2002. The case for more active policy attention to health promotion. *Health Affairs*, 21(2): 78 - 93.

## **General Comments**

7. The CDHB has been a partner in the development of this document and has fed into a number of stages as well as facilitating an Integrated Planning Workshop on the document on 26 November. The comments below are a summary of much of the discussion we have already inputted into and we consider would further improve health outcomes for the community.

## **Specific comments**

### ***Housing Growth***

8. Housing growth: We somewhat agree with the proposed approach. We continue to have some concerns about how to ensure any greenfield development enables communities to have easy access to core amenities and nearby public services. This enables the building of communities rather than just homes. We also support any efforts to ensure there are employment opportunities close to where people live. We support the 10 minute community diagram in the document but cannot see where or how it is being specifically identified for implementation.
9. Housing types: We agree with the approach. We fully support a range of housing types and housing being close to existing suburban centres. We would like to see a reflection of the need for other planning documents to take into consideration the wide range of living experiences people will want in the future and also encourage accessible and sustainable options. Housing should be of good quality, affordable, accessible and in a location that builds community. We would also encourage strong incentivising of building using universal design principles to ensure homes are suitable for all ages and stages. There are examples of how other councils have done this with developers, one example we are aware of is a Council in the North Island that allows development on an additional 5% of sections for those who build Lifemark standard houses. We can provide more information if this is helpful.

### ***Business Growth***

10. Commercial development framework: We agree with this approach. We support the focus of these around existing centres and encourage this to include a focus on employment opportunities for people who live in the area. We encourage the placement of public services within these commercial developments.

11. Industrial businesses: Agree with this approach here but do not want to encourage any unnecessary greenfields development.

### ***Growth needs***

12. Capacity Assessment evidence base: Agree with the assessments. While we believe the assessment is robust we also believe that information on where people want to live, the type of housing they wish to live in, the way they want their neighbourhoods and communities to interact and function needs to be included alongside this analysis. For example links between urban design and transport and health show mutual benefits. Having mechanisms for shared decision making and listening to communities about what they want and need is important to be built in across planning documents at the earliest stage.

### ***Transport and other infrastructure***

13. Densities around key centres: Agree with this approach. This is key to the success of Our Space and also needs to include how neighbourhoods are formed and supported to ensure social connectedness and a sense of inclusion. The document can do this by making a clear statement as to the importance of building strong connected neighbourhoods using the 10 minute neighbourhood as a strong example of this. Balancing transport so that multi modal options are possible is important from a rapid transit option through to supporting strong infrastructure for active and public transport that is safe, efficient and accessible for all. Multi modal transport needs to ensure easy connection between key activity centres and the central city. An equity approach might consider ensuring the delivery of active and public transport infrastructure is prioritised in areas where it is currently lacking. Specific populations may require additional resourcing to achieve this such as in the Eastern areas of Christchurch if population demand is not sufficient to make the case for additional infrastructure.

14. Broader infrastructure planning: Agree with this approach. We strongly support this and would encourage the infrastructure planning to be clearly articulated in this document including how other plans or strategies might contribute. Communities have good knowledge themselves about how they use and draw on infrastructure so linking into this knowledge would be one way to integrate this planning. Another option that could be signalled is spaces and places for park and ride options so that these can exist around existing infrastructure.

15. Final comments: Our Space does not deal strongly with natural capacity and resource sustainability. We suggest there could be stronger links to carbon zero plans as one example.

### **Summary**

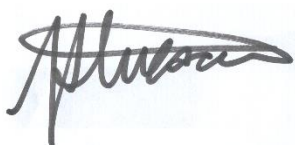
16. CDHB acknowledges that it has been a partner in developing this document and the comments above are designed to summarise feedback, much of which has already been discussed with the Partnership. Where it is useful and valuable we can provide further evidence to support our points ahead of the hearings.

### **Conclusion**

17. The CDHB does wish to be heard in support of this submission.

18. Thank you for the opportunity to submit on Our space

### **Person making the submission**



Anna Stevenson  
Public Health Physician

Date: 30/11/2018

### **Contact details**

Sandy Brinsdon  
For and on behalf of  
Community and Public Health  
C/- Canterbury District Health Board  
PO Box 1475  
Christchurch 8140

P +64 3 364 1777  
F +64 3 379 6488

Sandy.brinsdon@cdhb.health.nz