

# Host your own conversation on the future of Greater Christchurch

[greaterchristchurch.org.nz](http://greaterchristchurch.org.nz)

2050

# Introduction



## WHAT'S YOUR VISION?

While the year 2050 may seem a long time away, in order to meet the needs of our future communities, we need to start planning now.

Currently around 490,000 people live in Greater Christchurch.

We want to hear what you think Greater Christchurch should look like in 30 years; what you think is important for Greater Christchurch to offer its people in 2050; and what concerns you have about Greater Christchurch in 2050.

A lot has changed in the past 10 years. Christchurch city and surrounding towns in Waimakariri and Selwyn have been focused on rebuilding and recovering after the earthquakes.

We have shown an ability to withstand sudden shocks, to adapt and work together to support each other through adversity. That ability to respond to shocks is being tested again now as we respond and adapt to the changing nature of the COVID-19 pandemic and response.

The world is changing, and will continue to change, and it is important for us to look ahead and make sure we have the right plans, tools and resources to support the health and wellbeing of the people who live here, and the environment we live in.

Our city, towns and communities face some difficult decisions:

- How we adapt, respond to and mitigate the impacts of climate change, and what this means for our communities, our economy and our place?
- Where and how we grow to make sure our city and towns continue to provide what people need to live good lives?
- How we can manage the challenges and create opportunities resulting from technology and other social and global changes?

We also want to consider our role in Canterbury, the South Island and New Zealand—looking beyond Greater Christchurch, what contribution and role do we have in the future of our region, our island and the country?

People tell us the thing they love most about living here is the lifestyle. We have space to grow and need to work together to make the most of our strengths, and attract and retain people, business and investment, while protecting what's important to us.

## WHAT DO WE MEAN BY GREATER CHRISTCHURCH?

Greater Christchurch is a term used to describe the sub-region including Christchurch city and nearby areas within the Selwyn and Waimakariri districts, from Rolleston to Rangiora. It is the second largest urban centre in New Zealand and is home to 10% of the country's population.



TELL US A BIT ABOUT YOUR GROUP

---

What is the purpose of your group?

---

How many people are in your group?

---

What age range do you have in your group?

---

Where are you meeting (town/suburb/area)?

---

Who can we contact if we want to chat a bit more about your responses?

Name:

Phone Number:

Email:



# What makes Greater Christchurch great now?

---

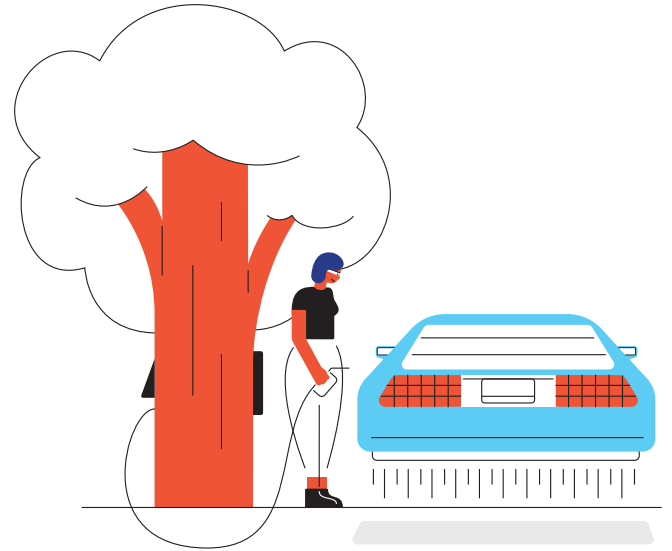
What are your favourite places in Greater Christchurch?

---

What is it about these places that you like?  
Please be as specific as you can about what makes these places great.

---

What do you like least about Greater Christchurch now?



# What do you want Greater Christchurch to be like in 2050?



Either as a whole group, or in smaller groups, have a discussion about what five words you feel best describe how you want Greater Christchurch to be in 2050.

---

Can you reach consensus on any of the words?  
If so, tell us which ones.

---

What other words did you choose?

---

Were there any words that really split opinion in the group?

---

What else is important to you that is not listed here?

WORKSHEET TWO

	What words did all of you agree were in the top 5? (please tick)	What words did some of you agree were in your top 5? (please tick)	Were there any words that caused lots of discussion? (please tick)
Resilient			
Progressive			
Sustainable			
High tech			
Welcoming			
Safe			
Diverse			
Relaxed			
Green			
Creative			
Multi-cultural			
Innovative			
Affordable			
Inclusive			
Accessible			
Global			
Equitable			
Outdoorsy			
Exciting			
Bustling			
Modern			
Caring			
Unique			
Beautiful			
Other (please specify)			



What's important  
to you?

## WORKSHEET THREE

When you think about the future of Greater Christchurch in 2050, what ten aspects are the most important to you? Again, you can either do this as a whole group or, if it's easier, break into smaller groups.

---

Can you reach consensus on any of the statements?  
If so, tell us which ones.

---

What other statements did you choose?

---

Were there any points that were strongly debated?

---

What else is important to you?

WORKSHEET THREE

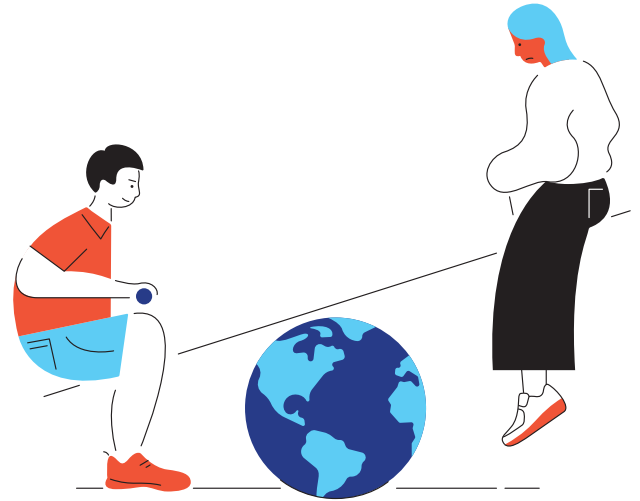
	What statements did all of you agree were in the top 10? (please tick)	What statements did some of you agree were in your top 10? (please tick)	Were there any statements that caused lots of discussion? (please tick)
It's easy to get around			
Streets and public spaces are designed and built for people			
I can access my everyday needs close to my home			
Christchurch central city is thriving			
Cultural diversity is visible and embraced			
District townships are thriving			
There is an affordable range of quality housing options			
Public transport, walking and cycling are easy and affordable			
Greater Christchurch's Māoritanga (Māori culture and way of life) is visible and embraced			
There is easy access to the natural environment			
There is a wide range of work opportunities			

WORKSHEET THREE

People are able to realise their work or career aspirations			
There are lots of events, festivals and entertainment opportunities			
It's a great place to start, grow and sustain businesses			
Business and entrepreneurship are valued and celebrated			
There are lots of great bars, restaurants and music venues			
Innovation and technology are embraced to improve lives			
Everyone has sufficient income and resources			
The economy is environmentally sustainable			
Everyone has access to high quality education and learning opportunities			
There are lots of arts and cultural activities			
Communities are connected and people trust and help each other			
Communities are inclusive			

WORKSHEET THREE

People feel safe			
People can express their creativity			
A balanced and healthy lifestyle is supported			
People participate in local democracy and decision-making			
There is lots of green space and trees			
Nature, including water-bodies, are protected and respected			
Water and energy are used efficiently			
Waste is minimised, with good options to reuse and recycle			
Carbon emissions (greenhouse gas) are minimised			
Native ecosystems are protected for improved biodiversity			
Other (Please specify)			



What are your concerns?



What are your ten main concerns for Greater Christchurch in 2050? Again, you can either do this as a whole group or, if it's easier, break into smaller groups.

---

Can you reach consensus on any of the statements?  
If so, tell us which ones.

---

What other statements did you choose?

---

Were there any points that were strongly debated?

---

What else is concerning you?

WORKSHEET FOUR

	What statements did all of you agree were in the top 10? (please tick)	What statements did some of you agree were in your top 10? (please tick)	Were there any statements that caused lots of discussion? (please tick)
Traffic congestion is getting worse			
It is difficult travelling around the area			
We are losing local character, and cultural and historic heritage			
There is a lack of affordable and quality housing options			
Urban areas are spreading too far into rural areas			
Housing density is too high in our neighbourhoods			
Places and spaces are not accessible or useable for all			
There is increasing social isolation and loss of sense of community			
There is discrimination in our communities, work places, schools and universities			
There is a lack of trust in democratic leadership and institutions			

WORKSHEET FOUR

There are not enough options for recreation and entertainment			
There is a lack of opportunities for cultural expression			
There is a loss of liveability and work/life balance			
It is costly and difficult to access health services			
There is limited resilience to future pandemics, natural disasters and hazards			
There are increased risks to regional security and public safety (e.g. terrorism and other crime)			
We are losing our natural ecosystems and indigenous biodiversity			
There is not enough nature, parks, trees and open spaces			
We are not doing enough to offset the impacts of climate change (such as floods, droughts, storms and sea level rise)			
There are food and water shortages			
There are pollution and waste management issues			

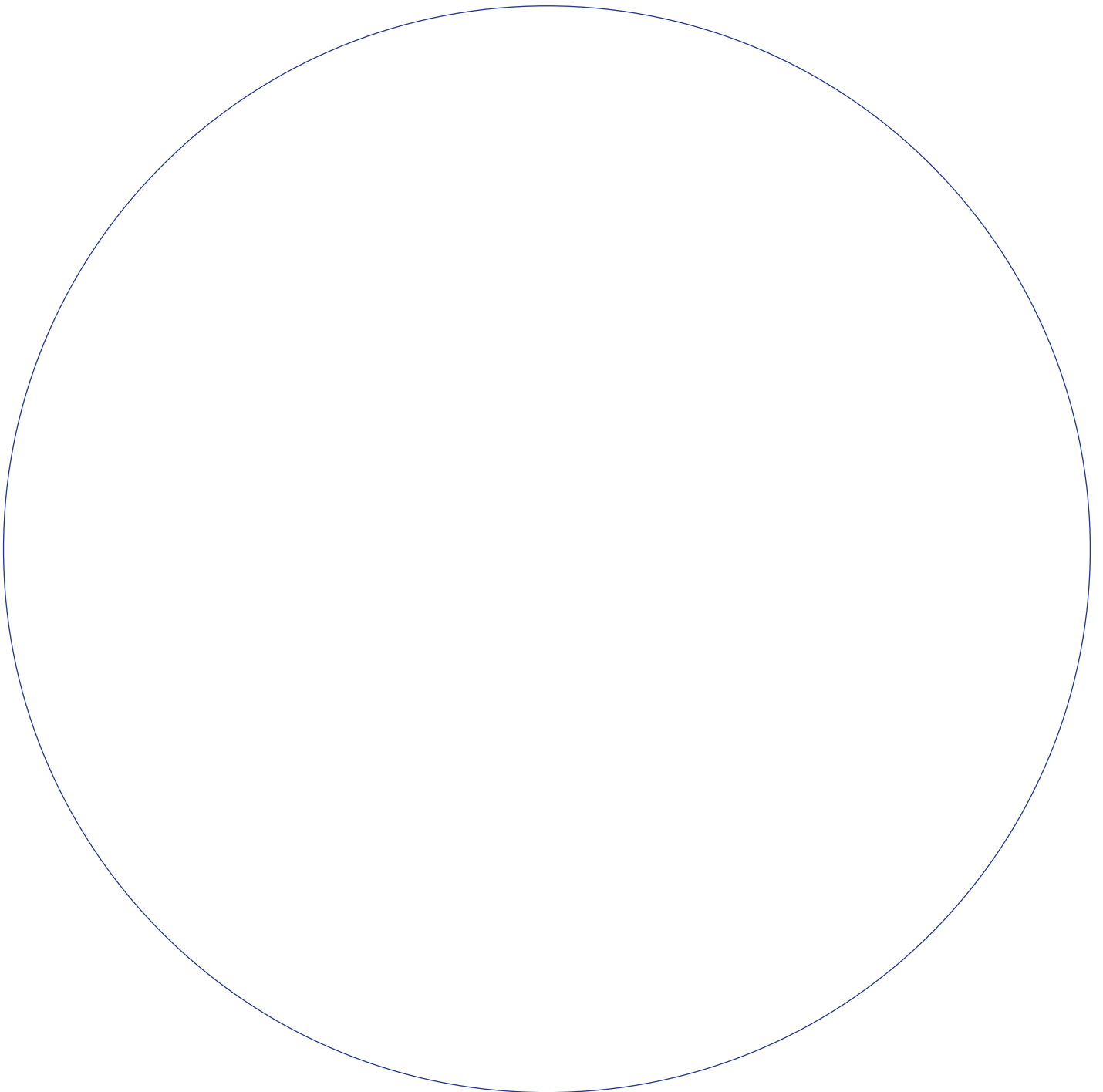
WORKSHEET FOUR

There is too much population growth and development			
There is not enough economic activity and growth to support vibrancy			
It is not somewhere young people choose to live			
There is poor provision of services for our ageing population			
We are not keeping pace with technology advances including a lack of adequate digital infrastructure			
There is a limited range and quality of job opportunities			
There is increased inequality			
There are not enough education and learning opportunities			
The government is imposing too many restrictions and is collecting too much information about us			
Other (please specify)			



# How should your neighbourhood continue to grow?

On the blank pie chart below, show us the balance of activities you would like to see in your local area in the future.





Do you have any  
other thoughts?

---

If you could do one thing to make Greater Christchurch even better, what would it be?

---

Do you have any other thoughts or ideas about the future of Greater Christchurch that you'd like to share?